



IMX8 Multiplexer

QUICK-START GUIDE



Hardware Installation and Configuration

① Install your Gamry Instruments potentiostat

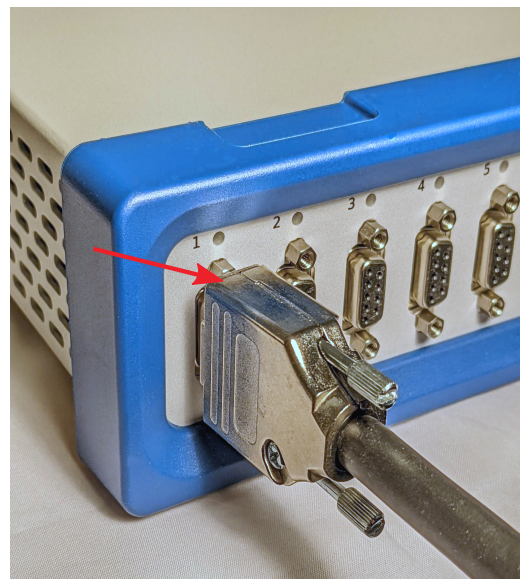
Install your Gamry Instruments potentiostat and calibrate the instrument. Please refer to the potentiostat Operator's Manual for detailed information. The latest version of the manual can be downloaded on the Gamry Instruments website at <https://www.gamry.com/support/documentation-downloads/>.

② Install the IMX8 Multiplexer cell cables

Each cell to be tested in an experiment requires a **cell cable**. The IMX8 comes with eight 1.5 m long cell cables (985-00038).

Connect the 9-pin D-sub connector of the cell cables to the mating cell cable connectors numbered from 1 to 8 on the front panel of the IMX8 and hand-tighten the jackscrews.

The other cable end has Gamry's standard banana plug/alligator clip termination to connect to a cell.



③ Connect your IMX8 to a Gamry potentiostat

When using either a Reference 600+/620 or Interface 1000/1010 potentiostat, a standard 1.5 m long **interface cable** (985-00080) is required to couple the potentiostat to your IMX8.

Connect the male 9-pin D-sub connector to the mating **Pstat** connector on the front of the IMX8. The male 25-pin D-sub connector plugs into the mating **Cell Cable** connector of your potentiostat.

Connecting your IMX8 to any other potentiostat requires a custom cable. The IMX8 Operator's manual includes a detailed description of the **IMX8 Potentiostat connector's** pin-layout as well as tips of how to build the cable.

Before building the cable or connecting any non-listed or third-party potentiostat to your IMX8, we strongly recommend to contact Gamry Instruments or your local representative.



4 Connect Power Adapter and USB Cable

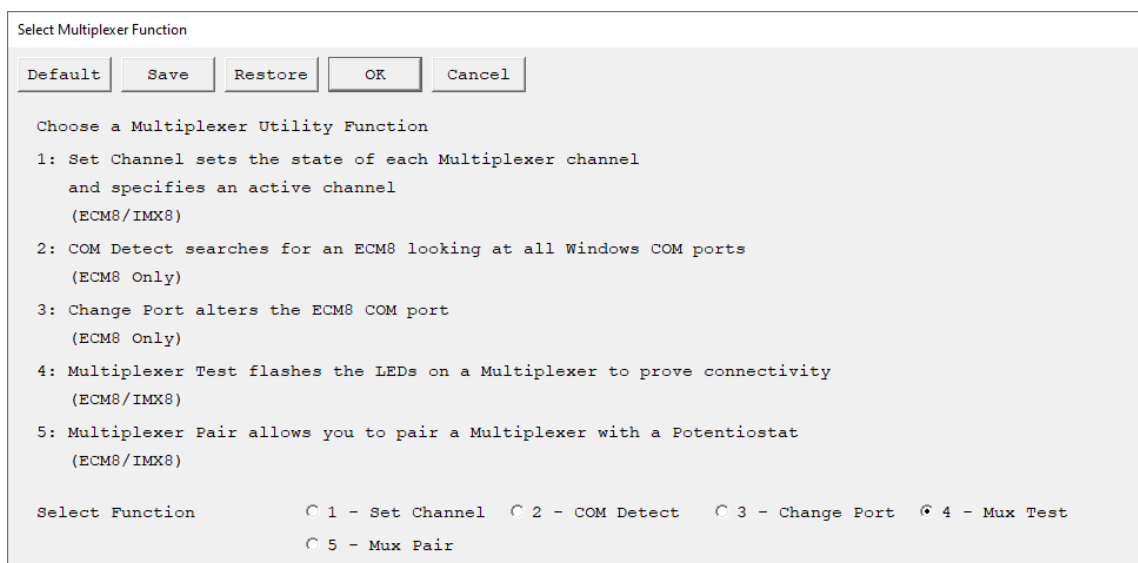
On the rear side of your IMX8 Multiplexer is the **Power In** connector located which connects to the supplied AC Adapter with its male 3-pin DIN connector. The other end of the power supply connects to an AC line cord which can be plugged into your AC Mains supply. The power supply is rated for operation from 100 to 240 V AC and 47 to 63 Hz. It should therefore be universally useful.

Note: Use only Gamry-approved power adapters with your IMX8 Multiplexer. Other power sources may alter the performance and safety characteristics of your IMX8 Multiplexer.

Your IMX8 Multiplexer is supplied with a standard High Speed USB A/B cable. Connect the nearly square connector to the **USB** connector on the rear side of your IMX8. The other end, a wider, rectangular connector plugs into a USB port on your computer.

5 Test your IMX8 Multiplexer in Gamry Framework

- 1) Make sure that your computer and IMX8 Multiplexer are turned on.
- 2) Open the Framework software and choose **Experiment > Utilities > Multiplexer Configure and Test**.
- 3) Select the function **Mux Test** and choose the Multiplexer to test.
- 4) Verify that all eight amber LEDs on the front of the IMX8 illuminate in sequence two times.



6 Set channel state of your IMX8 Multiplexer

- 1) Make sure that your computer and IMX8 Multiplexer are turned on.
- 2) Open the Framework software and choose **Experiment > Utilities > Multiplexer Configure and Test**.
- 3) Select the function **Set Channel** and choose the Multiplexer.
- 4) Turn on/off individual channels, set their potential state, or specify an active channel.

Note: Only the amber LED of the channel that is currently running is illuminated.

7 Pair your IMX8 Multiplexer with a potentiostat

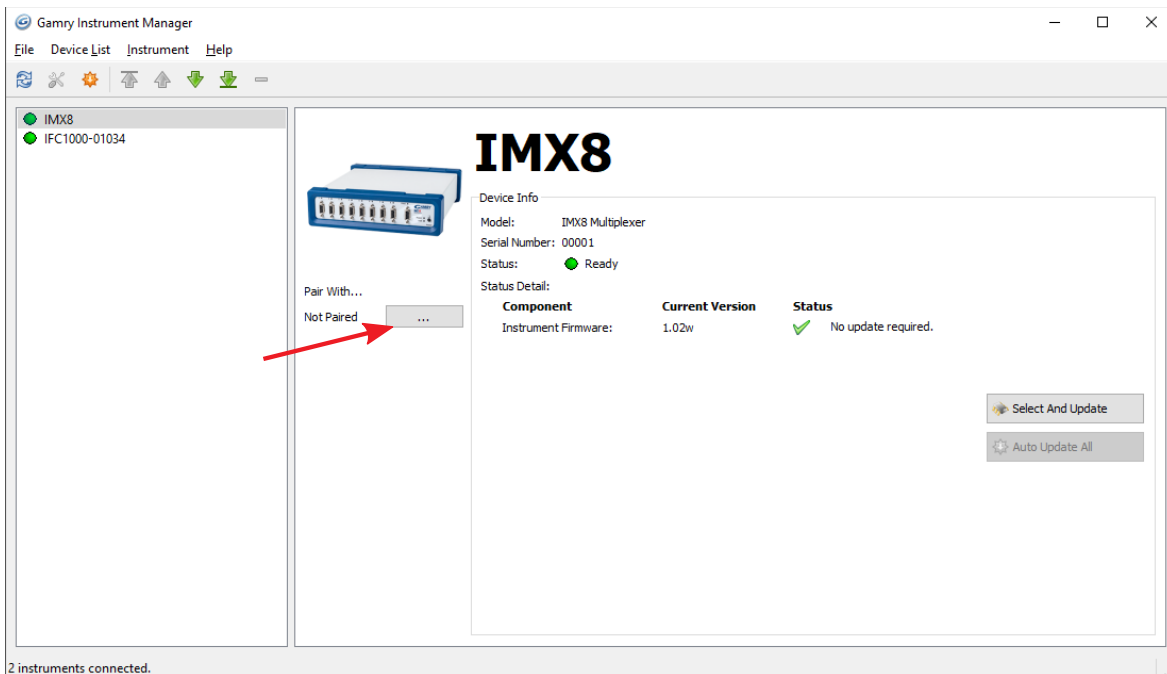
Gamry Framework software offers two different methods to pair your IMX8 with a potentiostat.

Method 1:

- 1) Make sure that your computer, IMX8 Multiplexer, as well as your potentiostat are turned on.
- 2) Open the Framework software and choose **Experiment > Utilities > Multiplexer Configure and Test**.
- 3) Select the function **Mux Pair**.
- 4) Choose the Multiplexer and then the potentiostat to pair with. Confirm your selection.

Method 2:

- 1) Make sure that your computer, IMX8 Multiplexer, as well as your potentiostat are turned on.
 - 2) Open the Framework software and choose **Options > Instrument Manager...**
- The Gamry Instrument Manager opens.



- 3) Press the **...** button under **Pair With...** to open a selection window.
- 4) From the list, select the potentiostat you want to pair with your IMX8 Multiplexer. Press **OK** to confirm.
- 5) The Gamry Instrument Manager displays now the paired potentiostat.

