

Updating the Firmware of Your Reference 600/3000

Introduction

Your Reference 600/3000 requires instrument firmware to operate with your Framework software. *Each version of the Framework Software has a specific version of instrument firmware that must be installed in order to use the instrument.* Instructions in this note apply to Framework versions 5.63 and later.

There are two separate firmware images that can be updated on your Reference 600/3000. The first is the Instrument Firmware. It handles the majority of the functionality of the Reference 600/3000. The second is the Communications Firmware. It handles the USB communications between your Reference 600/3000 and the host computer. The vast majority of software revisions only require an update to the Instrument Firmware.

Procedure

Administrator privileges are required to carry out the update process. The instrument firmware is packaged in a binary file (.BIN) and is copied to "C:\Program Files\Gamry Instruments\Firmware" ("C:\Program Files (x86)\Gamry Instruments\Firmware" for Windows 7 64-bit).

1. Close any open Gamry software before proceeding to the firmware update utility.
2. Navigate to the Windows **Device Manager**. In Windows XP it can be accessed from the 'classic' view of the **Control Panel** by selecting **System Properties**, and clicking the **Hardware** tab. In Windows 7 you can simply type 'device manager' into the Start Menu search field.
3. Locate the instrument to be updated under the **Gamry Instruments Devices** section. Right-click on the device and select **Properties**.

4. Select the **Firmware Update** tab (See **Figure 1**). Click **Update Instrument Firmware** and navigate to the firmware binary file described above.

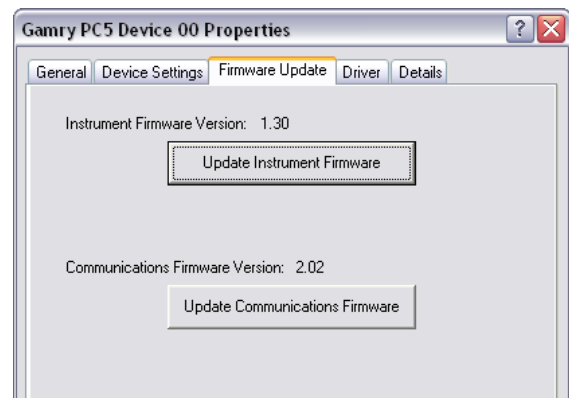


Figure 1: The Firmware Update tab in the Device Properties.

The USB indicator on the Reference 600/3000 will turn red during the update procedure. Once the update is successful, press **OK**. Your Reference 600/3000 is ready for use.

- CAUTION -

Do not interrupt a firmware update that is in progress. An incomplete upload can potentially render a Reference instrument inoperable until it is returned to Gamry for reprogramming.

Updating the Firmware of Your Reference 600/3000. Rev. 5.65
6/24/2011 © Copyright 1990-2011 Gamry Instruments, Inc.