

Figure 4-7
Device Settings Tab

The screenshot shows a Windows-style dialog box titled "Gamry PC5 Device 00 Properties". It has a blue title bar with a question mark icon and a close button. Below the title bar are five tabs: "General", "Device Settings" (which is selected and highlighted), "Firmware Update", "Driver", and "Details".

Inside the "Device Settings" tab, there is a "Label" field containing the text "Ref 600". Below this is a section titled "Authorization Codes" which contains seven rows, each with a code label and a text input field:

Code Label	Value
DC105	1234567890
CPT110	
EN120	
EFM140	
PHE200	
PV220	
EIS300	2345678901

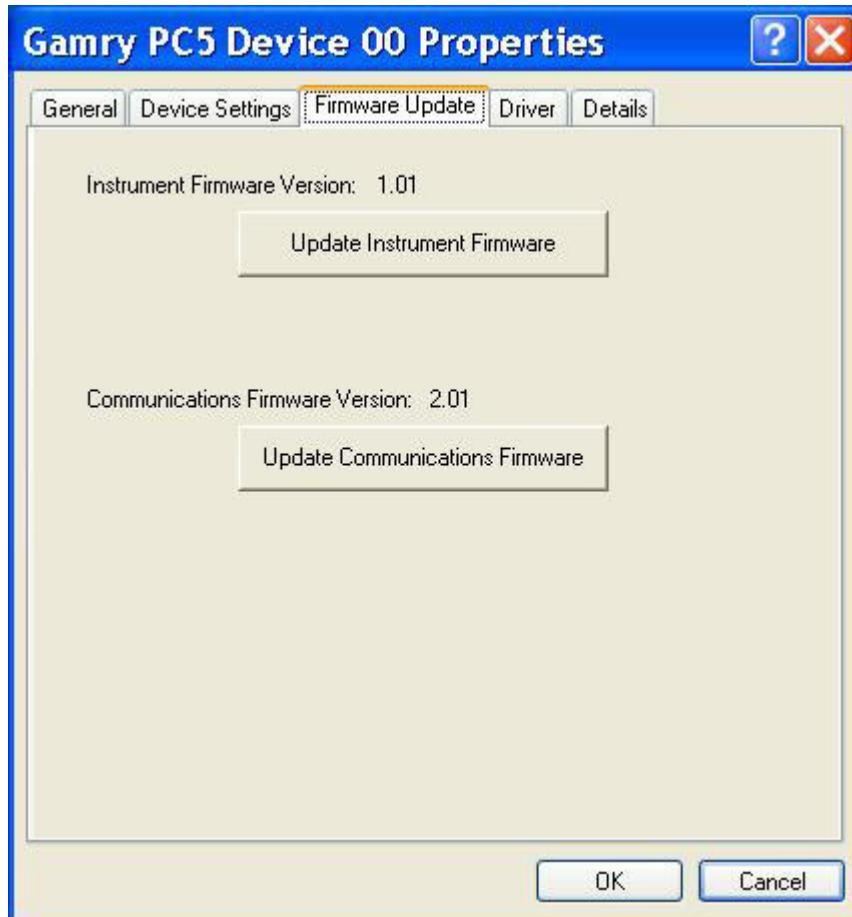
At the bottom of the dialog, there is a "Device Section" field containing the text "PC5600-00003". At the very bottom right, there are two buttons: "OK" and "Cancel".

You can enter or edit any of the authorization codes or Label for the device by clicking on the appropriate edit box and entering the information. When you are finished making changes press **OK** to store the changes.

Firmware Update

Your Reference 600 was shipped with the latest version of Firmware. From time to time, however, Gamry makes changes to the instrument code, and a firmware update will be required to make use of the new or improved code. There are two separate code images that can be field updated on your Reference 600. The first is the Instrument Code. This is the code that handles most of the functionality of the Reference 600. The second is the Communications Code. This code handles the USB communications between your Reference 600 and the host computer. You must first close the Gamry Framework Software before proceeding to update any code in the device. To update either of these code images, you must first select the appropriate device in the Device Manager, as discussed in the Device Manager section. Once you have selected the appropriate device, right click and select **Properties**. Next, select Firmware and you will see a screen that looks like Figure 4-8:

Figure 4-8
Firmware Update Tab



Depending upon which code you wish to update, click on either **Update Instrument Firmware**, or **Update Communications Firmware**. You will then be prompted for a file. Navigate to the location of the firmware file on your computer, and then press Open. The update procedure will begin. You should see a status bar that shows the progress of the update. The USB indicator on the Reference 600 should also turn red during the procedure. Once the update is successful, press **OK**. Your Reference 600 is once again ready for use.

Appropriate updates can be obtained from the Gamry Instruments website at www.gamry.com. Should you encounter a problem updating the firmware in your Reference 600, please contact Gamry Instruments for assistance.

Interrupting a firmware download can cause a catastrophic failure of your system. Do not turn off the Reference 600, do not unplug the USB cable, and do not stop the host computer operation when the USB LED is a steady red color.

Caution

Do not interrupt a firmware download that is in progress. An incomplete download can render a Reference 600 inoperable until it is returned to Gamry for reprogramming.